



GLOBAL
PARTNERSHIPS

PROGRESS REPORT 2010



Global Partnerships expands opportunity for people living in poverty in Latin America by supporting microfinance and other sustainable solutions.

Small loans to start or expand a business. Financial education. Simple health screenings. Technical assistance.

When hardworking people get the small boost they need to earn an income and improve their lives, they can accomplish big changes.

They multiply their income. They provide shelter, nutritious food, healthcare and education for their families. They create a more promising future for their children. They strengthen their communities.

Through our microfinance partners, Global Partnerships provides people with the tools to help them progress out of poverty and improve their livelihoods—and lives.



“Global Partnerships’ approach is unique and highly impactful. It supplies affordable loans to innovative microfinance institutions in Latin America that are delivering not just loans to their clients, but a package of highly effective tools to help people progress out of poverty.”

- Dean Allen,
CEO of the McKinstry Co.
and board president for
Global Partnerships

FROM THE PRESIDENT & BOARD CHAIR

Dear friends,

Over Global Partnerships' 16-year history, the microfinance industry has changed dramatically, most notably by the rapid growth of commercial, profit-maximizing microfinance institutions. In this dynamic market, Global Partnerships has stayed focused on people instead of profits by investing in exceptional microfinance institutions that reach the people most in need with microcredit and other high-impact solutions.

The primary way we accomplish this is through our social investing strategy, which now has a five-year track record. In June of 2010, our first investment fund matured and refunded 100 percent of capital to investors, demonstrating that it's possible to deliver high social impact and fixed-income returns with well-managed risk. Our second and third funds continued to perform well. And over the last year, we secured commitments from 39 investors for a new \$20 million fund.

As our team works to deploy this next fund, we are committed to staying at the forefront of social impact in microfinance. We have refined our criteria for our microfinance partners to further emphasize inclusion of people who have had no previous access to credit, and innovative "microcredit-plus" programs that address multiple dimensions of poverty.

We also expanded beyond microfinance to launch an initiative with PATH and microfinance partner Pro Mujer to create a sustainable model for improving women's health through the microfinance platform. Still in the early stages of development, it aims to not only improve, but also to save women's lives.

Such partnerships are the foundation for the impact you'll read about on the following pages. It's how we are helping create a world where everyone matters.

Thank you for your support.

Rick Beckett
President & CEO

Bill Clapp
Chair, Board of Directors



Rick Beckett

DOUG OGLE



Bill Clapp



OUR IMPACT

2009–2010 HIGHLIGHTS

ROAD PAVED FOR “MICROFINANCE-PLUS” FUND

In preparation for the close of Global Partnerships’ fourth fund in the fall of 2010, we spent much of 2009–10 designing a fund aimed at increasing access to microfinance and other sustainable solutions to poverty. Against a stronger set of criteria for microfinance partners, our Managua field team performed in-depth due diligence on approximately 40 prospective microfinance partners, putting together an outstanding list of prospective partners for our 2010 fund. We also secured \$20 million in new commitments from 39 investors who wish to align their assets with a mission of expanding opportunity.

The first year of the initiative focused on re-tooling Pro Mujer in Nicaragua’s existing health programming to be financially sustainable and have greater impact. Ultimately, we hope to create an effective model for MFIs to provide health solutions to their clients that can improve—and save—lives.

FUND MILESTONE REALIZED

In June 2010, Global Partnerships (GP) finished repaying all investors in our first social investment fund, Microfinance Fund 2005, either on time or ahead of schedule. Microfinance Fund 2005 was a five-year, \$2 million debt fund that paved the way for two subsequent funds that together have helped GP increase the capital we have invested in microfinance institutions from less than \$1 million (in 2005) to more than \$37 million today.

MICROFINANCE SUPPORT EXPANDED TO MEXICO

In the fall of 2009, Global Partnerships made our first loan to a Mexican microfinance institution, FRAC, a nonprofit organization that works in some of the poorest areas in Mexico and offers interest rates that are relatively low by Mexican microfinance standards. This was a critical win for advancing GP’s mission because of the need for affordable, mission-based microcredit in Mexico, which is dominated by for-profit MFIs that charge high interest rates for microloans.

FIRST SOCIAL INVESTOR FORUM HELD

A crowd of 175 people gathered at the Meydenbauer Center, in Bellevue, WA, for Global Partnerships’ Social Investor Forum in June 2010, a first-ever event that spotlighted our microfinance investment fund strategy and how it helps us expand opportunity for people living in poverty.



JERÓNIMO OPORTA

PARTNERSHIP TO IMPROVE WOMEN’S HEALTH LAUNCHED

Cervical cancer. Domestic abuse. Teen pregnancy. These are all key health challenges for women in Latin America that are being addressed by a groundbreaking microfinance-health initiative launched by Global Partnerships, PATH and Pro Mujer in October 2009.

The initiative was born of the belief that microfinance institutions (MFIs), which reach an estimated 9 million people in Latin America alone, are an untapped, powerful strategy for reaching women living in poverty with basic health services and education.

“We’ve been very impressed with Global Partnerships’ approach to social investment. By working with microfinance institutions to offer additional services, they are helping to bring microfinance to the next level.”

- Elizabeth Boggs Davidsen, principal investment officer, Inter-American Development Bank’s Opportunities for the Majority Initiative, a GP fund investor

GLOBAL PARTNERSHIPS BY THE NUMBERS

As of June 30, 2010

**\$37.7
Million**

Capital at work

7

Number of countries
where Global
Partnerships works

27

Number of microfinance
partner institutions

845,000

Number of people being
served through our
microfinance partners

276,000

Number of microloans
funded by Global
Partnerships'
capital since 2004

94 Cents
of every dollar

goes to Global
Partnerships' programs

98%

Average repayment
rate by borrowers to
Global Partnerships'
microfinance partners

1 in 3

Number of people
in Latin America
living below
the poverty line ^[A]

**48
Million**

Number of people in
Latin America who could
benefit from access to
microfinance ^[B]

9 Million

Number of people in
Latin America with
access to microfinance ^[C]

[A] World Bank World Development Indicators, 2009 (based on 2007 data)

[B] One-quarter of the population living below the national poverty line

[C] MIX Market, The Microbanking Bulletin No. 18, 2009, available from: www.themix.org/sites/default/files/MBB%2018%20Spring%202009.pdf

Lucia Tarqui EL ALTO, BOLIVIA

Lucia, a client of GP microfinance partner Pro Mujer, makes and sells hand-crafted plaster piggy banks. GP staff first met Lucia in 2008. When we saw her again two years later, she had added windows to her house, paved her courtyard and even bought a white 1986 Toyota Corolla to deliver her orders—a real breakthrough for her business. Because of Lucia's success, her four younger children are on track to stay in school and become professionals like their two older sisters.



OUR PARTNERS

Global Partnerships provides capital to a select type of microfinance institution (MFI) that we call social enterprises: mission-driven organizations that are financially sound and focus on people most in need, such as the rural poor. Our partners often combine microfinance with services like business training and preventative health education that address multiple dimensions of poverty.

Our partners are selected through a thorough due diligence process that culminates with a site visit—up to a week long—by GP’s Managua-based team. In addition to financial sustainability, potential MFI partners are evaluated on rigorous criteria related to their social impact.

Our partners’ business model is aimed at economic sustainability instead of maximum profitability, which allows them to reinvest all profits in programs that benefit people living in poverty.

Here are a few examples of how our partners have an impact.

- **Pro Mujer in Nicaragua** and **Pro Mujer in Bolivia** serve women living in poverty with not only

microloans but health services and education, such as regular Pap smears, dental care and trainings on women’s empowerment.

- GP’s newest partner, **FRAC**, is a World Vision affiliate that works in some of the poorest areas of Mexico, offering microloans at lower interest rates than other MFIs in the country.

- **Enlace** works in very remote areas of El Salvador, serving primarily women with start-up loans that can help them get a small business off the ground. With an average loan size of about \$250, Enlace has one of the smallest average loan sizes in our portfolio.

- **Espoir** works in the Pacific Coast and southern regions of Ecuador, serving 100% women with microloans, health services and trainings on topics ranging from children’s health to chronic disease prevention to financial management.

- **FDL**, a Nicaraguan MFI that focuses on the rural poor, serves its poorest clients with loans and agricultural assistance to help them succeed in building a specific business, such as raising pigs or chickens.

“Having Global Partnerships as one of our most important strategic partners has helped us provide credit to the most vulnerable people in our country. We find in Global Partnerships an organization that is just as committed to social mission as we are.”

– Diego Fernández Concha Murazzi, Director of Microfinanzas, PRISMA, a GP microfinance partner in Peru

Juan Antonio Rosales Martínez

SONSONATE, EL SALVADOR

Juan admits that his line of work doesn’t leave much time for sleep. He began his thriving bakery with the help of a \$120 loan from Enlace, a GP microfinance partner that specializes in reaching people in rural areas with small start-up loans. Every day, he begins baking at 2 a.m., producing about 900 loaves a day. Juan hopes that his hard work will ensure that his two children find careers that don’t require such long hours to keep food on the table and a roof over their heads.



Mexico

Number of MFI partners: 1
Borrowers reached: **18,913**
Capital invested: **\$500,000**

Honduras

Number of MFI partners: 2
Borrowers reached: **21,499**
Capital invested: **\$147,000**

Nicaragua

Number of MFI partners: 8
Borrowers reached: **175,666**
Capital invested: **\$9.3 million**

El Salvador

Number of MFI partners: 4
Borrowers reached: **100,837**
Capital invested: **\$11.5 million**

Ecuador

Number of MFI partners: 4
Borrowers reached: **156,374**
Capital invested: **\$4.8 million**

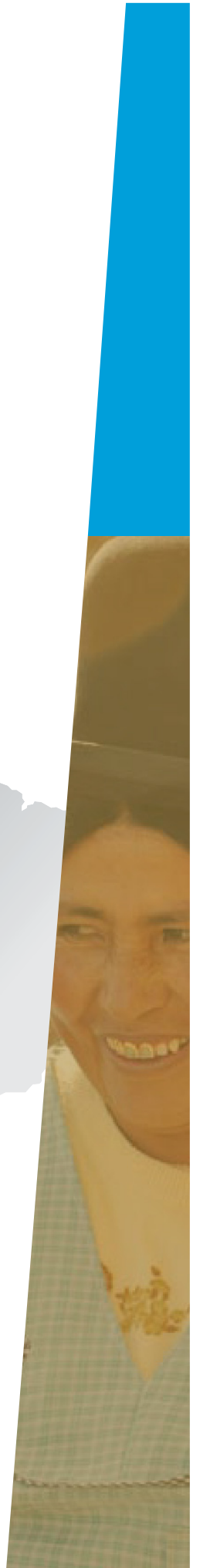
Peru

Number of MFI partners: 5
Borrowers reached: **166,421**
Capital invested: **\$4.7 million**

Bolivia

Number of MFI partners: 3
Borrowers reached: **205,458**
Capital invested: **\$6.8 million**

All information listed as of June 30, 2010



OUR STRATEGY

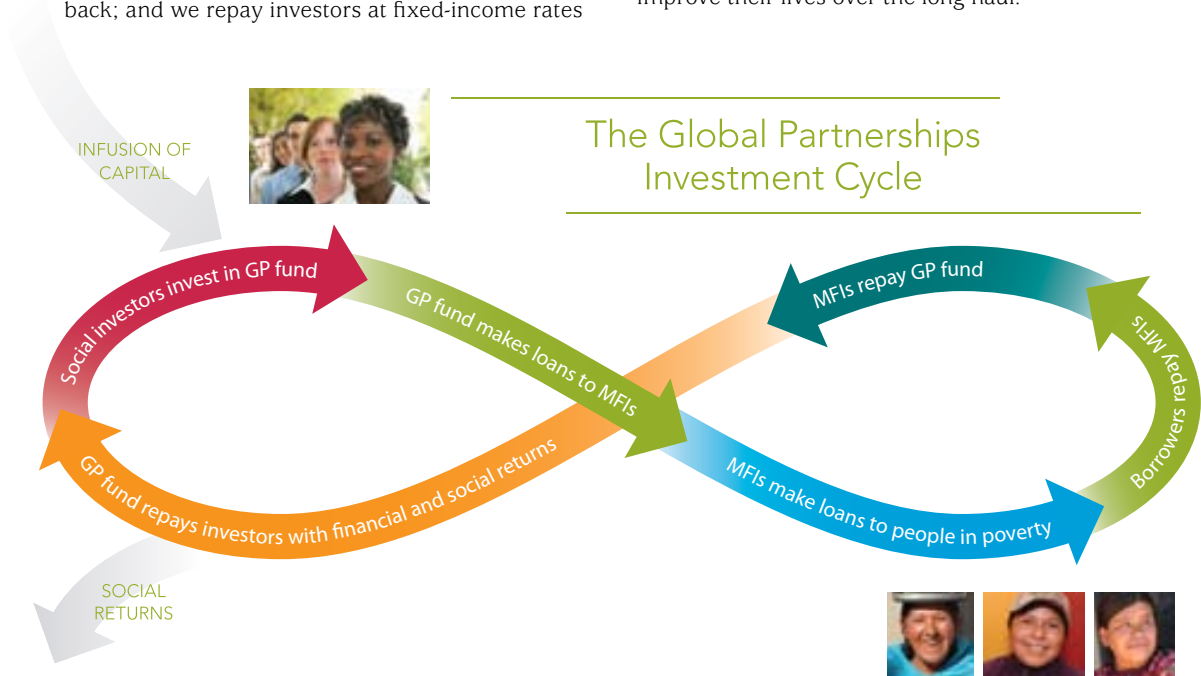
Since 2005, Global Partnerships has pursued our mission through a social investment fund strategy that has allowed us to significantly increase the number of people we reach.

Here's how it works: We raise capital from institutional and individual investors who wish to align their assets with their values, and pool that capital in a debt fund. We loan the capital at affordable rates to a select portfolio of high-performing, mission-driven microfinance institutions (MFIs) which, in turn, provide small loans and other services to people who typically wouldn't get access to credit.

The borrowers pay back the MFIs; the MFIs pay us back; and we repay investors at fixed-income rates

over a multi-year period. The fund also delivers what we call "social returns"—meaning the impact that MFIs have on the lives of the people they serve. In an era when the microfinance industry has become dominated by the for-profit, commercial model, Global Partnerships' focus on social performance is especially needed.

GP has launched three funds since 2005, with more than \$37 million invested in 27 microfinance partners as of June 30, 2010. Beyond our fund strategy, GP is exploring ways to help our partner MFIs increase their impact by pairing microcredit with services that can help people in poverty improve their lives over the long haul.



“As an investor in Global Partnerships’ debt fund, I am excited that I can leverage my foundation’s corpus to provide loans to socially driven microfinance institutions so that they can grow, provide more loans and reduce poverty.”

– Dorothy Largay, Founder and CEO of Linked Foundation; GP fund investor and donor



“I’ve been blessed that I’ve been able to move forward.”

- Ana Elisa Hernandez Gonzalez



Ana Elisa Hernandez Gonzalez and Rosa Amelia Hernandez Gonzalez

NANDAIME, NICARAGUA

In a rural community outside the reach of electricity and running water, these two sisters and their mother have formed a family borrowing group. Together, they take out microloans from GP partner FDL, who also provides them with technical assistance. Ana (left) owns a small store and also raises pigs and cattle. Rosa grows crops and used her loan money to buy a cow and a bicycle to get supplies more easily. Both sisters have been able to build houses for their families. A shared dream is to purchase a pump so that they won't have to haul their water from the river.

FINANCIAL SUMMARY

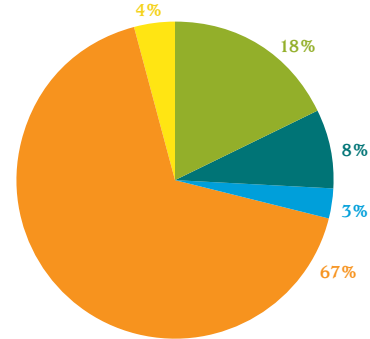
Global Partnerships is a 501(c)(3) nonprofit organization. Our operations are funded primarily by the generous contributions of individuals, foundations and corporations. Global Partnerships also earns revenue through the management of our three Global Partnerships microfinance funds and through the provision of microfinance investment services to a strategic partner.

During fiscal year 2010, 94 cents of each dollar spent was directed to program services. Out of the total spent on program services, 82 percent or \$10.3 million represented recoverable grants made to microfinance institutions and interest expense associated with our Global Partnerships microfinance funds. Our loans to microfinance institutions are expensed as recoverable grants and as these loans are repaid, our income will reflect recoverable grant income payments. The total of unpaid recoverable grants at the end of fiscal year 2010 was \$25,388,000.

Net assets for Global Partnerships, excluding the GP Microfinance Funds, were \$6,585,000 at fiscal year end 2010. The GP Microfinance Funds, which consist of GP Microfinance Fund 2005, GP Microfinance Fund 2006, and GP Microfinance Fund 2008, ended the fiscal year with a combined negative net asset balance of \$23,494,000. These net asset figures will be positively impacted as the \$25,388,000 in outstanding recoverable grants are repaid.

To view our most recent audit report, please visit www.globalpartnerships.org or contact the Global Partnerships office. Global Partnerships is a member of the Better Business Bureau's Wise Giving Alliance, and has been awarded the GuideStar Exchange Seal.

HIGHLIGHTS FOR THE PERIOD OF JULY 1, 2009 THROUGH JUNE 30, 2010



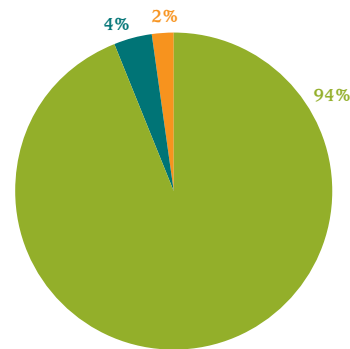
REVENUES

CONTRIBUTIONS

Individuals	\$1,259,000	(18%) *
Corporations	\$585,000	(8%)
Foundations and organizations	\$188,000	(3%)

EARNED INCOME

Recoverable grant income	\$4,654,000	(67%)
Earned and other income	\$252,000	(4%)
Total revenues	\$6,938,000	(100%)



EXPENSES

Programs	\$12,562,000	(94%) **
Development	\$553,000	(4%)
Administration	\$201,000	(2%)
Total expenses	\$13,316,000	(100%)

* Contributions by individuals through family or community foundations are included in the Individuals category.

** The Programs expense figure includes \$10.3 million in recoverable grant expense and related interest expense associated with the three GP Microfinance Funds.

THANK YOU TO OUR DONORS

Global Partnerships is humbled by the extraordinary support we have received. We are honored to recognize the cumulative giving of our supporters in this progress report. Contributions listed below are through June 30, 2010; some recognized donors designated all or part of their support to the Initiative for Global Development (IGD).

CORPORATE SUPPORTERS

\$150,000 AND OVER

Matthew G. Norton Co.*
McKinstry Company Charitable Foundation*
Meisenbach Capital Management*
Microsoft Corporation*
Orrick, Herrington & Sutcliffe LLP
Strasburger & Price, LLP

\$50,000 TO \$149,999

Alaska Air Group, Inc.
Coastal Transportation Inc.*
Laird Norton Company LLC*
Nixon Peabody LLP
ROAD Apparel*
Tile For Less, Inc.*
Waldron & Company*

\$25,000 TO \$49,999

Adobe Systems Incorporated
The Boeing Company
Carrix
Citigroup Inc.
Developing World Markets, Inc.
JELD-WEN, inc.
Laird Norton Tyee*
ProBuild Holdings Inc.
Recreational Equipment, Inc. (REI)
Skyway Luggage Company
Symetra Financial*

\$10,000 TO \$24,999

Seattle University's Albers School of Business and Economics
Bank of America Corporation*
Cargill, Incorporated
Charlie's Produce
CityBank
The CNA Corporation
Colliers International Seattle*
Concur
Cornerstone Advisors, Inc.
Costco Wholesale Corporation*
Cummins Inc.
DUX Area, Inc.
Expeditors International of Washington, Inc.
Forastieri Abogados
Gap Inc.
Google Inc.
Huntington Steele
KPMG LLP*
Legacy Venture
Mercer Human Resource Consulting
Miranda y Amado Abogados
Monsanto Company
Precision Aerospace Corporation
Puget Sound Business Journal
Russell Investment Group
Safeco Life Insurance Company
SSA Marine
Starbucks Coffee Company
Statements Tile
Stoneway Concrete
Weyerhaeuser Company

\$5,000 TO \$9,999

Ahrens DeAngeli Law Group LLP
Canlis Restaurant
The Commerce Bank
Deloitte

Double M Properties, LLC
First Mutual Bank
Fortune Bank
Foster Pepper PLLC
Goldman, Sachs & Co.
GordonDerr*
Hillis, Clark, Martin & Peterson Ivar's, Inc.
Korn/Ferry International
Madrona Investment Group, LLC
NDG Investment Group
Neil Walter Company*
Polygon Northwest Company
Regence BlueShield
Ryzex
Seattle Homes and Lifestyles Magazine
Seattle University*
Unico Properties, LLC
Wells Fargo Bank
Wentworth, Hauser and Violich*
The Westin Seattle

\$1,000 TO \$4,999

Aegis Living
Agreement Dynamics, Inc
AIC Ventures
Ash Grove Cement Company
BHV Design Lab
Bryant Christie, Inc
The Campbell Group, LLC
Clise Properties, Inc.
Corbis Corporation
Dagoba Organic Chocolate
Equal Exchange Coffee
Everest Equipment Company
ExOfficio
The Fearey Group
Freehold Group, LLC
Gastineau Communications
Glacier Northwest
GMMB
Grace Construction Products
Grounds for Change
Harris myCFO, Inc.
HD Fowler Company
Hemphill Brothers Inc.
HomeStreet Bank
JPMorgan Chase & Co.
Karr Tuttle Campbell
Keithly Electric Company
Kibble & Prentice, Inc.*
Kohl Construction & Remodeling, Inc.
Kraft Foods Inc.
Lane Powell PC
McCutchen Group
Michael Kenwood Consulting, LLC
Mithun Architects
Moss Adams LLP
North Pacific Affiliates
Pacific Star Energy
The Port Blakely Companies
Prairie Foundation
PricewaterhouseCoopers LLP
Schuchart Corporation
Seattle Aero
Sheraton Hotels and Resorts
SkoFlo Industries, Inc.
Sphere Foods of Washington, Inc.
SpyGirl Productions, LLC
Theo Chocolate
Union Bank

Wards Cove Packing Company
Western Peterbilt, Inc.
Woods & Associates
Wright Hotels, Inc.

INDIVIDUALS, FOUNDATIONS AND ORGANIZATIONS

\$150,000 AND OVER

Dean and Vicki Allen*
Ed and Barbara Benshoof
Bill & Melinda Gates Foundation*
Doug and Nancy Boyden*
Bill and Paula Clapp*
The Craig and Susan McCaw Foundation
Mike and Gretl Galgon*
Brookshire-Green Foundation
M.J. Murdock Charitable Trust
Ginny and John Meisenbach*
Dick and Bonnie Robbins*
Seattle International Foundation
Bill and Maria Skilton
Stoneliagh Fund*
Tom and Pam Waldron*
The William and Flora Hewlett Foundation
Bob and Ruth Wright*
Anonymus*

\$50,000 TO \$149,999

Jack and Rebecca Benaroya
Better World Campaign
Elaine Coles*
Suzan and Kurt DeIBene*
Lindsay Eberts and Patti Paxton Eberts*
Walter Euyang and Susan Lammers*
Fannie Mae Foundation
Bud and Judi Greer
Horace W. Goldsmith Foundation
Inter-American Development Bank
Floyd Jones*
Laird Norton Family Fund
Maureen Lee and Mark Busto
Linked Foundation
Paul and Yaffa Maritz
Jack and Alexandra McMillan
Morino Institute
Nike Foundation
Ned and Susan Palmer*
Piedmont Community Church
Rockefeller Brothers Fund
The Rockefeller Foundation
SEBA Foundation
Raj and Dilu Shah*
Boyd and Mikki Sharp*
James and Janet Sinegal
Peter and Leslie Strong*
Fred and Judy Triggs*
United Nations Foundation
West Foundation
George and Wendy Weyerhaeuser
James and Ann Wiborg
Anonymus (2)*

\$25,000 TO \$49,999

Sharon Allen and James Evans
Richard C. Blum
Judy and Ward Bushnell
Paul Canniff
Matthew Clapp*
Steve Davis and Bob Evans

Berwick Degel Family Foundation*
Anne and Brian Emanuels*
Global Poverty Partners Foundation
Tessa Keating and Stephen Rothrock*
Cindy and John Larson*
Brian McAndrews and Elise Holschuh*
Pamela McCabe*
Bruce and Jolene McCaw*
MCJ Foundation
Bill and Lyanne Monkman*
Jane Morrison
Richard Noffsinger*
Eddie and Kim Poplawski
Gary and Vicki Reed
Dave Rianhard
Stuart and Lee Rolfe*
Peter Rose and Julie Higgins
William and Jill Ruckelshaus
Jon and Judith Runstad
Catherine and David Skinner
Phil and Maggie Stalcup
George and Susan Swindells
Todd Vogel and Karen Hust*
Anonymus

\$10,000 TO \$24,999

John Agnew and Patty Hebert
Doug and Laurie Barrett
Don Bartlett
Beckett Family Fund
Debbie and Jim Bevier*
Charlie and Courtni Billow
Ann and Bruce Blume
Alec Brindle
David Brown
Patrick M. Byrne, Ph.D.
Mark and Anne Marie Cappellano
Carly and Frank Fiorina Family Fund
Dale Chihuly and Leslie Jackson Chihuly
Margaret Clapp*
Elizabeth Clapp Williams and Joe Williams*
Marguerite Corbally
Daniel Duffus
Edmonds Unitarian Universalist Church
Tom and Sue Ellison
Karin Frey and Tom Dorrance*
Henry and Anne Marie Frigon
Michael and Lynn Garvey
German Marshall Fund of the U.S.
Gilhousen Family Foundation
Richard and Ann Grace
Victory and Richard Grund
Leah Knapp Hair
Michelle Hanes
John and Kathy Harnish
Bill Helsen
Jon and Kim Hemingway
Charles and Cindy Henderson*
Holthues Trust
Sally and Warren Jewell
Gregg and Nancy Johnson
Mary and Jonathan Kauffman*
Karleen Kennedy*
Robert and Miryam Knutson
Skip and Jackie Kotkins
Kirlin Charitable Foundation
Peter Lynch

Continued

THANK YOU TO OUR DONORS

Marie D. Jeffrey Foundation
David A. Marques and
Janet V. Frohnmayer*
Vilma and Michael McCormey
Anne McGonigle and Greg Witter
Greg and Kendy Meyer*
Terry Miller and Debra Shank Miller
John P. Morgridge
Marsha Morrison and Stu Barker
Dick and Dora Moxon*
Gary and Sandra Mulhair*
William and Sally Neukom
Charles and Eleanor Nolan*
Jim and Mariette O'Donnell
Robert L. Parker, Jr.
Walter Pereyra
Judy Pigott*
Dana Pigott
Jennifer Potter and John Winton*
Terry and Kathleen Proctor*
Gary and Amy Raden
Dr. Judith A. Ramey
Gary Rieschel and
Yucca Wong Rieschel
Paul Robshaw and Linda Bengel
Rotary Club of Portland
George and Dion Russell
The Russell Family Foundation
Edward and Cheryl Scott
Bob Seaton and Jill Moodie
Orin Smith
Karen and James Solimano*
The Spiro Philanthropic Fund
Ted and Priscilla Tanase
Robert V. Taylor and Jerry D. Smith
Maggie and Doug Walker*
Western Union Foundation
H.S. Wright III and
Katherine Janeway*
Gary and Lark Young
Anonymous

\$5,000 TO \$9,999

C.M. Ambrose, Jr.
Lisa and Michael Anderson
Sherilyn Anderson and David Tan
Sandra Archibald and
Chester McCorkle*
David and Cindy Baker*
Chuck and Linda Barbo
Alice and Bob Bishop
Inez Black
Peter Bladin and Donna Lou*
Philip C. Bowers
George and Kim Brace
Mr. and Mrs. Robert Breskovich
Bruce and Pat Budge
The Bullitt Foundation
Michael and Darden Burns
The Byrne Foundation
Steve and Carol Calkins*
Ryan and Lindsay Calkins
Jeff Chen and Jill Denny
Ann Cheng
Mrs. Jacqueline Clapp
Ann W. Cook and Greg Thies
Ronald Cosgrave
Jack and Janet Creighton
Dick DiCerchio
Charles Dickey and
Sheila Wyckoff-Dickey*
Jane Dudley*
Kathy and George Edwards*
Daniel and Nancy Evans*
Mr. and Mrs. Gene Flath*
Patty and Steve Fleischmann*
Harold and Stephanie Fowler*
Curt and Tonya Fraser
Doug and Linda Frye*
Jean Gardner*
Renee and Mike Gastineau*

The John F. and Mary A. Geisse
Foundation
Ken and Sandy Glass
The Good Neighbor Foundation
Thomas and Ann Gores
Gerald and Lyn Grinstein
Nick and Leslie Hanauer
Marion Clapp Hand
Harold F. and Muiriel O. Brockman
Family Trust
Lucy Lee Helm*
Harold and Mary Fran Hill*
Ed and Susan Irwin
Barbara Potter Jaech and
Daniel Jaech*
Jewish Community Endowment Fund
Kirsten Johnson and David Rothrock*
Diane and Kirk Johnson
Sarah and Marty Jourard
Jeff and Deborah Keenan*
Joe Kenny and Jennifer Siegel*
Janet Ketcham
Dr. Gordon Kritzer and
Nancy Case Kritzer
Kaycee and Michael Krysty*
Laura and Erik Larson
Timothy Lee
Carla and Don Lewis
Tom Lucas and Barbara Standal*
Patricia and John Lummis
Gerry and Barbara Maurer*
T.J. and Soozie McGill
W. H. Meadowcroft
Lindsey Meyer
Steven Miller and Pamela Cowan
Maria Montalvo and Strom Peterson*
Allen Moore*
Mike and Joyce Murray
National Christian Charitable
Foundation
Christine and William A. Newsom Jr.
Dave Olsen
The Paramitas Foundation
Joseph Phillips
Mary Pigott*
Port of Seattle
Port Orchard Rotary
Jim and Rebecca Potter
Nanette Pyne*
Jack and Marilyn Rafn
Edward Rasmuson
Raynier Institute & Foundation
Scott Redman
Fred and Alynne Richard*
John and Sarah Rindlaub
Rotary Club of Seattle-Int'l District
Kay Schellberg and Terry Anderson*
Don Schlosser and Deborah Easter
Walt and Katherine Schlotfeldt
Bill and Dana Schultheis
Schultz Family Foundation
Frank and Harriet Shrontz
Paul M. Silver and Christina Marra*
Langdon and Anne Simons*
Robert and Kathryn Spence
Dale and Carol Sperling*
Greg and Linda Stevenson
James and Joyce Talbot
Bill and Pat Taylor*
Daniel Temkin
Diane and Lou Tice
Paul and Leigh Tischler
Cameron and Dondi Truesdell
Christine and James Warjone
Bill and Judy Weisfield*
Cynthia Wells and Tim Kerr*
Dr. Michael Gannon and Mo West*
Janice Wilson
Woodmere Foundation
James and Kathy Youngren
Anonymous

\$1,000 TO \$4,999

AACSB International
Robin Abrahams and Toby Taylor
Amy Acher
Bill Adamucci
Teri Akin*
Richard and Connie Albrecht
Kenneth and Marleen Alhadeff
Kim Allen
Christopher and Felicia Alston
Mari Anderson and Terry Green
Paul Anderson
Erik Anderson
Susan and Charles Armstrong
Jill and Warren Ashton*
Leo and Leslie Backer
Terrance Bagley
Ester Bailey
The Honorable Brian Baird and
Rachel Nugent
Andrea and Sid Ball
Sharon Ballantine
Pam Barker
Patty and Jimmy Barrier
Lillian and Anthony Bay
Richard H. Beahrs
Howard and Lynn Behar
John and Shari Behnke
Behnke Foundation
Douglas Beighle and Kathleen Pierce
Bellevue Overlake Rotary
Gregg and Lauren Bennett
Patrick Binns and
Elizabeth Coppinger
Alan and Sally Black
Fraser and Deirdre Black
Merrill Black
Anne and Wayne Blair
Marilyn Blitz
Jabe Blumenthal and Julie Edsforth
Carol Bobo
Megan and Bruce Boice
David Bolin
Betty Bottler
Megan Bowman and Chris Ajemian*
Brady Charitable Foundation
Paul and Debbi Brainerd
Stan and Jane Brand
Jeanette Brandal
Julie Brandsness and Rick Griese*
Jim Bredouw and
Anne Gillette-Bredouw
Sandra Brems
Gordon Breuer/Emergent Property
Company, LLC
Ed and Pam Bridge
Herb Bridge
Jamie Brightman
Katharine Witter Brindley and
Ralph Brindley
Patti Brooke
Jeffrey and Susan Brotman
Bruce Gregory Brown and
Sherri DelBene
Debbie and Henry Brown
John Brown
Mary Rose Brusewitz
Mari Brusseau and Rick Sowers*
Bill Bryant and Barbara Feasey
Ann Buckner*
Fred and Jane Buckner
Artie and Sue Buerk
Jonah Burke
Phyllis and William Campbell
Marcos Campos*
Canlis Family Fund
Barb and Pat Carey
Diana and Charles Carey
Bob and Suzanne Carile
Kathleen Carlson
Wendy and Reuven Carlyle

Charlotte Carrido
Jim and Lori Carroll*
Barrie Carter
Barbara and John Carver
Clete and Bronwen Casper
Ron and Mary Jo Castleberry
Elizabeth Castleberry
Marjorie Chadsey
Bill and Deborah Churchfield
Ned and Haleh Clapp
Tamsin Clapp
Chris Clark
Dwayne Clarke
A.W. Clausen
Kristina and Bob Clawson*
Rebecca and Christopher Clements
Al Clise
Josephine and Robert Coe
Ellen Cole and Michael Daum
Jeff and Anne Cole
Jim and C.K. Coles
Conrad N. Hilton Foundation
Michael Cook
Sharon Cooper
David and Dorothy Courtis*
Duane and Debbie Covey
Crane Family Foundation
Russell and Lora Crawford
Paul Cressman
Douglas Beighle and Kathleen Pierce
Howard M. Crow*
James and Jill Crutcher
Jim and Barbee Crutcher
Mary Beth Culler
Edward Cummings and Erin Chung*
Barbara Cupp-Gietzen
Peter Cvietusa and Debbie Efrid
Linda Danforth
Daniel J. Evans School of
Public Affairs
Patricia Davis
Steve and Susan Day*
David and Rachel De Busk*
Giuseppe deCandia
Ronald DeChene
Laura Delman
Charles M. Denny, Jr.
Mike Derzon and Robin Supplee
Laurie and Daniel DeYoung
Dee Dickinson
Eric Dillon
Mic Dinsmore
Anthony DiRe
Bernie and Denny Dochnahl*
Sue Donaldson and Paul Fletcher
Nicole Donnelly
Debra and Jeffrey Doran*
Jim and Candace Doud
Bob and Lynne Dowdy
Joan and Denny Duffell
John and Marlene Durbin*
David and Anne Duryee
Maryel Duzan
Jim and Geri Dykeman
Linda Eckholm
David Ederer
Donna Egge
Carole and William Ellison
Stan Emert
Sonya Erickson and Tim Seifert
Peter and Melissa Evans
Sam Evans
Evergreen Foundation
Mary Eversole
Erin Ewing
Jack and Karen Faris
Ron and Linda Farrell
Pat Fearey
Ellen Ferguson
John J. Fernandes

Continued

Lee and Mary Field
 Phelps Fisher
 Bartow and Marilyn Fite
 John and Patricia Flavio
 Sheri and Jon Flies
 William Flynn
 Bill and Paula Foege
 Dick and Wilma Footh
 Janet and Doug Footh
 Cliff and Cleo Forbes*
 Tally Forbes
 Barry and JoAnn Forman
 Bill Franklin
 Dick Frederick*
 Marlyn Friedlander and
 Gilbert Scherer*
 Dr. John P. Galgon
 Saul Gamoran
 Gail and Stephen Gant
 Booth Gardner
 Tracy and Tom Garland*
 David Gerlach
 Ron and Judy Gibbs
 Jack and Sheila Giesler*
 Rob Glaser
 Michael and Jackie Goldfarb
 Genna Gormley
 Linn Gould and Tim Summers
 Elizabeth Gould
 Janice Gray and Kerry Fowler
 Frank Greer and Stephanie Solien*
 Claire Grinstein
 Genevieve and Brent Guinn
 George and Marjorie Guy*
 Becky and Chris Guzak
 Odo Habeck
 Tod and Barbara Hamachek
 Carol Hambidge
 Jean Hamilton and Terry Simpson
 Charles Hammond
 Ann and Pete Hanson
 Lawrence and Hylton Hard
 Carlee Harder-Brown and Rich Brown
 Don and Jannette Hastings
 Memorial Fund
 Dan and Pam Hay
 Bill Hayden*
 Tom and Peggy Hayward
 Kay Heafey
 Helen Martha Schiff Foundation
 Tom and Barb Hemphill
 Pat Henderson
 Jan Hendrickson
 Bob and Phyllis Henigson
 Jason Henning and Gitane Versakos*
 Henry M. Jackson Foundation
 Piper and Larry Henry-Keller*
 Michael Hickey
 Troy Hill
 Julie Hillers
 The Honorable Carla Hills
 Rhonda and Bruce Hilyer
 Suzanne Hittman
 Adrian Ho
 Karl and Anne Hoagland
 John and Carol Hoerster
 Harris Hoffman and Joan Gray
 Leanne and Buzz Hofford
 Karen Holt
 David and Nole Ann Horsey*
 Elizabeth and Arnold Huang
 Heather Hughes
 Lyman and Gretchen Hull
 Michael Humphries and
 Judith Ralston
 Linda and Phillip Hunter
 Samuel Hunter
 Susan Hutchison
 Greg and Carol James -
 Topics Entertainment
 Raymond Jarris

Susan Jeffords and William Powell
 Mark and Laura Jennings
 Lynnette and Dag Jensen*
 James and Jeri Jensen
 Suzanne Jobin and Tom Corrdry
 John D. and Catherine T. MacArthur
 Foundation
 Brent and Catherine Johnson
 Ted and Linda Johnson
 Mary and Ray Johnston -
 Johnston Architects
 Barbara Johnston
 Murray and Jeanie Johnstone*
 Kathryn and John Jones
 Sheridan Jones
 Nicola Jones
 Yvonne Jones
 Maryann Jordan and Joe McDonnell*
 Lauri Jordana, Conexión Marketing
 Diana Judson
 Denise and Paul Kajanoff
 Donna Katzin
 Lee Keller and Mike Rusch*
 Connie and Ethan Kelly
 John and Maggi Kelly
 E. Peter Kelly
 John and Milesse Kennedy
 Margaret Kineke and Dennis West
 Anthony and Lori King*
 Art and Irene King
 Gerry and Kathy Kingen
 Frank and Virginia Kitchell
 Ann Klein
 Knights of Columbus Council 11780
 Diane and Jon Knoll
 Paul Kohl and Philomena O'Neill
 Martha Kongsgaard and
 Peter Goldman
 Amy Kosterlitz and Todd True*
 Paul and Ludmila Kraabel
 Berit Kvaernes and Ed Josberger
 Laird Norton Family Foundation
 Afshan and Amin Lakha
 Councilmember Kathy Lambert and
 Daryl Lambert*
 Jack and Yvonne Lamey*
 Lynne and Norm Langseth
 Lori Langston
 Jacqueline LaPlante
 Claudia and Patrick Larkin
 Jim Larkin
 Alida and Christopher Latham
 Michael and Mary Lee
 Patricia Leicher
 Bob and Sarah Lesko

Carol Lewis and Tom Byers*
 P. Lewis
 Donald and Mary Lewison
 Gary and Chris Linden*
 Tom Lindquist*
 Richard and Tracey Locke
 James and Christina Lockwood
 John and Diane Logan
 Roger and Laurie Lohrer
 Bruce and Andrea Lorig
 Jennifer Louden
 Loughlin Family Foundation
 Peter and Melinda Lucas
 Tom and Annalee Luhman
 Pam and Chuck Lyford
 Elyn and Ken Macek
 Whitney MacMillan
 Dawn MacNab
 Vikesh and Kiran Mahendroo
 Bob Mahler
 Jim and Sheila Mallahan
 Byron and Antoinette Mallott*
 Michael Malone
 Connie Mao and Rich Tong
 Marguerite Casey Foundation
 Ruthann and Jerry Martin
 Lynda Martin
 Mike and Molly Martinez
 Jim Masson and Kathleen Heinrich
 Trish May
 Matt McBrady and Dee Dee Fisher
 Angie McCarrel
 Mark and Linda McClamrock*
 Lorne and Mary Beth McConachie
 Nathan and Laurie McCoy
 David and Marcia McCracken*
 Rich and Lindsey McCune
 Melody McCutcheon
 Congressman Jim McDermott and
 Therese Hansen
 Carol and Robert McDonald
 Mary Kay McFadden
 Bonnie McFarland
 Susan McGrath and Joel Horn
 Chris and Bill McKay
 Tricia McKay
 Roderick and Janet McNae
 Mary and Chris McNeil
 Sharon and Andrew Mead
 Chris and Tiffany Megargee*
 Donald and Susan Mellish
 Marie Mentor
 Martha Meredith
 David Mersereau
 Bill and Lynn Meyer

Brian R. Meyers*
 Gerald and Wendy Mickle
 Warren and Laurie Miller*
 Glen and Alison Milliman
 Randa Minkarah
 Don and Pamela Mitchell
 Ellen Mondress
 Doug and Janet Moore
 Alene Moris*
 Craig Morris*
 Martha and Colin Moseley
 Christopher Moxon
 Jamie and Karen Moyer
 Laura and Bob Muglia
 Ralph and Ellen Newberg*
 Elisa Murray and John Butterfield*
 George and Linda Murray
 Deb Narine
 Damon Nasman and
 Kristin Wood-Nasman
 Randy and Anne Neely
 Anna Nelson
 John and Laurel Nesholm
 Alan and Ellen Newberg*
 Jose and Janis Niño de Guzman
 Jennifer Nixon
 Rex and Tracy Noffsinger
 Grace Nordhoff and Jonathan Beard
 Nancy Nordhoff
 Linda Nordstrom
 Mark Nunnely
 Bill and Maria O'Brien
 Kathleen O'Connor*
 Sean O'Leary
 Eimear O'Neill and
 Ruben Garcia Ballesteros
 John and Deanna Oppenheimer
 Paula and John Orehek
 Our Family for Families First, Inc
 Bob and Bonnie Packo*
 Carol and Donald Padelford
 Alinda and Richard Page*
 Vicki and Chris Pallas
 Alix Palmer
 Bill and Jean Parent
 Victor and Nancy Parker
 H. Stewart Parker
 PATH
 Elizabeth Patterson*
 Susan Paulsell
 The Peach Foundation
 Christine and Patrick Pendergast
 Marilyn and Jim Peterson*
 Dale Peterson and Bill Nilsson
 Heidi Peterson

Continued

**SPECIAL THANKS TO OUR 2009 BUSINESS OF HOPE LUNCHEON
 CORPORATE PARTNERS**

VILLAGE BANK VISIONARY

MATTHEW G. NORTON CO.

MCM A MEISENBACH COMPANY

VILLAGE BANK TRUSTEE



VILLAGE BANK LEADER

Charlie's Produce
 Concur
 Cornerstone Advisors, Inc.
 Foster Pepper PLLC

Grounds for Change
 Huntington Steele
 Laird Norton Company
 Laird Norton Tye

Polygon Northwest Company
 Seattle University
 Stoneway Concrete
 Theo Chocolate

THANK YOU TO OUR DONORS

Cynthia Petrie
Jon and Barb Pettit
Franco Piazza and
Regina Rabinovich
Morris and Marlene Piha
Piñero Zamora Family
Jeff and Janey Pinneo
Sue and Stan Pocock
David and Sheri Pollock
David and Shirley Pollock
Suzanne Poppema and John Cramer
Alice Portz
Abby Potter
Bill and Susan Potts
Julie and Christopher Prentice
Kelley Price and Nancy Wenke
Harry Prior
Jonie Ashby Pritchard and
Llewelyn G. Pritchard
Roy Prosterman
Preston and Margo Prudente
Rona Pryor*
Teresa Purcell
Queen Anne United Methodist
Church
William and Carol Quigg
Leigh and Louise Rabel*
Alan and Andrea Rabinowitz
Frank and Barbara Radford
Richard Radford and Laurie Becker
Kathleen and Martin Rae
Brooks and Suzanne Ragen
Michael Raskin and
Susie Kupferman
Lisa and Bob Ratliffe
Susan Reichert and Robert Thomas
Carol Remz and Larry Sagen
Renton Rotary Chapter, Inc.
Kevin Rice and Lisa Fernandez*
Steve and Fredrica Rice*
Greg Rice
Jeri Rice
Robert and Marilyn Richards
James Richards
Scott Robertson
Kyle and John Robinson
Melessa Rogers*
Sister Mary Jane Romero, OSB

Kate Roosevelt and
Caroline Maillard
Linda Williams Rorem and
Richard Rorem
The Rosemary & David Olsen
Foundation
Ivette Rothenberg
Tim and Nicole Rothrock*
Azaria and Sandra Lee Rousso
Sarah and Kent Rowe
George and Debra Rowley
Betty and Randy Rubenstein
Jeannie and William Ruckelshaus Jr.
Bob Russell
S.D. Bechtel, Jr. Foundation
Melisa Samuelson
Stanley and Ingrid Savage
Julie and George Schaller
John Schlosser and
Marnie O'Sullivan
Julie and Jeff Schoenfeld
Gilliat and Sherrill Schroeder
Sharon and Randy Scott
Mike Scott
Seeds Of Faith Ministries
Eugene Seligmann and
Katherine Kilcher
Robert B. Shapiro
Lisa and Steve Sharafian
Greg Shaw
Kathryn Shields
Susan Shyne and Kirk Dawson
Karl and Stacie Siebrecht*
Mimi and Martin Siegel
Uri Silberstein and Jackie Fradkin
Brad and Janice Silverberg
Rich and Joyce Simmonds
James Simone
Nathalie and Martin Simsak
Paul and Susan Skoglund
Nick and Laurie Slater
Ken and Phyllis Sletten
Bill and Marilyn Smith
H. Martin Smith III
Alan Smith
Greg Smith, Urban Visions
James and Burnley Snyder
Mary Snyder
Kim Snyder

Alberto Solano Roca and
Yadira Castro
St. Mark's Episcopal Cathedral
St. Stephen's Episcopal Church
John Starbard
Maxwell and Betsy Steckler
Carlyn Steiner
Diane Stevens*
Lisa and Doug Stewart
Warren Stickney and
Collette Staumbauer
Lori Stonecipher
Lisa Strain and Clark Kokich
Elliot and Daytona Strong
Marc David Stubbs*
Stacy and Shaun Sullivan
Shelby Swanson and Tim Owens*
Dick Swanson
Lori and Steve Sweningson
Darryl Swenson
Jim Tanasse
Lyn Tangen
Ellen Taussig*
Billie and Tim Taylor*
Amy Taylor
John Teutsch
Aron and Sara Thompson
Ken Thompson
Mikal and Lynn Thomsen
Teresa Thornberg and
Ken Carpenter
Patsy and Mike Thrall
Ray and Margaret Tilden
Danielle and Brad Tilden
Gus Tirado
Val Tomey and Nick Cassino
Shari and Dennis Tompkins
Sheri and Jeff Tonn
Peter Torrebiarte and
Barbara Erickson
Lavinia Touchton
Mary and Stephen Toy*
Steve and Tricia Trainer
Randy Trettevik
Brent Turner
Bruce Valentine
Ted Van Dyk*
Roger Van Valkenburgh
Kathleen Vilchez

Jeff and Georgia Vincent
James and Patricia Voelker
Gilberte Volpe
Wally and Linda Walker
Robert C. Wallace
David Walter
Wilma Warshak
Washington Council on
International Trade
Samuel and Liz Wasser
Gary and Karla Waterman
Roberta and Tim Watterson
John Weaver
Ali and Paul Webb
Tom Weeks and Deborah Oyer*
Jonathan Weinstein and
Tamara Bailey
WEM Foundation
Andrea and Gary Wenet
Whatcom County North Rotary Club
Kip White and Greg Crick
Whitsitt Family Fund
Sam Whittle
Jodi and Mike Wibbels
Deborah Wicks
Faith Wilder
Bob and Peggy Wilkerson
Tonia Willekes
Arlene and Ocean Williams*
Bruce Williams and Gro Buer
Kathryn Williams
Anneliott Willis and Jim Nida
David Winter
Marcy Woodruff
Shauna Woods
Sarah Woods
World Vision
Sandra Wright
Dave Wright
Anonymous (11)*

THANK YOU TO ALL OF OUR DONORS UP TO \$1,000

We strive for accuracy in our donor records. Please contact us at info@globalpartnerships.org if there is a change or correction.

*Donors who have made annual gifts to GP for five consecutive years.



Damiana Susana Tizon Italaque

LARI, PERU

Damiana used to earn a paltry living working someone else's land. With the help of GP microfinance partner FONDESURCO, today she raises crops, is the proud owner of a variety store, and runs a billiards hall in a building adjacent to her home. Because of her income, Damiana and her husband were able to pay the costs related to complications she developed when pregnant with her daughter Sarah. Damiana only has an elementary school education, but dreams of someday studying alongside Sarah at the university.

LEADERSHIP

BOARD OF DIRECTORS

Dean C. Allen

CEO
McKinstry Company

Christopher M. Alston

Attorney
Foster Pepper PLLC

Bill Clapp

Co-founder
Global Partnerships

Paula Clapp

Co-founder
Global Partnerships

Steve Davis

Senior Advisor
McKinsey & Co. Social
Sector Office

Walter Euyang

Retired COO
Headbone Interactive

Curt B. Fraser

*President, Middle Market
Banking, Washington*
JP Morgan Chase

Mike T. Galgon

Co-founder
aQuantive, Inc.

Bert Green

Cardiologist

Gregg Johnson

Principal
Johnson Consulting
Associates, LLC

Matthew McBrady

Managing Director
Silver Creek Capital
Management, LLC

Eddie Poplawski

*Former President, CEO &
Owner*
Anderson Chamberlin, Inc.

Peter Torrebiarte

*Director of Coffee
Sustainability*
Starbucks

Tom Waldron

Founder and Partner
Waldron & Company

Maggie Walker

Civic Volunteer

Bob Wright

CEO and President
Matthew G. Norton Co.

LEADERSHIP COUNCIL*

Paula Clapp**Doug Boyden****Nancy Boyden****Margaret Larson****Ginny Meisenbach****Ned Palmer****Bonnie Robbins****Dick Robbins**

STAFF

Porfirio Artola

Director of Portfolio Monitoring

Rick Beckett

President & CEO

Elizabeth Castleberry

Chief Development Officer

Carlyn Chase

*Development Operations
Officer*

Mark Coffey

Chief Investment Officer

Ana María Echeverría

*Administration &
Compliance Manager*

Tara Murphy Forde

*Director of Investment
Monitoring*

Cindy García

Executive Assistant

Jason Henning

*Director of Development &
Investor Relations*

Ana Maria King

Communications Officer

Chris Megargee

*Director of Community &
Corporate Relations*

Chris Moxon

*Investment Contracts
Administrator*

Dick Moxon

Director of Investment Analysis

Elisa Murray

Director of Communications

Daniel Näf

*Director of Portfolio
Management*

Margaret Philip

*Vice President, Finance &
Administration*

Lara Puglielli

*Vice President, Enterprise
Development*

Beth Randall

Operations Officer

Gerardo Talavera

Portfolio Officer

Jessenia Vallejos

Administrative Coordinator

Jonathan Vanegas Flores

Portfolio Officer

Ricardo Visbal Agredo

*Director of Portfolio
Management*

Board, Leadership Council and staff
listed as of October 31, 2010

*Launched in 2009, the Leadership
Council is composed of individuals
who had the vision to create Global
Partnerships and whose leadership
sustains us.

PHOTO CREDITS:
Unless otherwise specified, all photos
by Chris Megargee/Global Partnerships

Thank you to Gary Mulhair for
his many years of service to
Global Partnerships as a board
member and Chief Investment
Officer. Gary retired in 2010.

GLOBAL
PARTNERSHIPS

“Global Partnerships enables hard-working entrepreneurs to help themselves and define success and well-being for their own families. It is THE organization with which I’m most proud to be associated personally and professionally.”

– Renee Gastineau, owner, Gastineau Communications Inc. and GP donor



**GLOBAL
PARTNERSHIPS**

www.globalpartnerships.org

DEDICATED TO EXPANDING OPPORTUNITY FOR PEOPLE LIVING IN POVERTY